

Fernley Commercial Building

380 Crimson Road, Fernley, NV

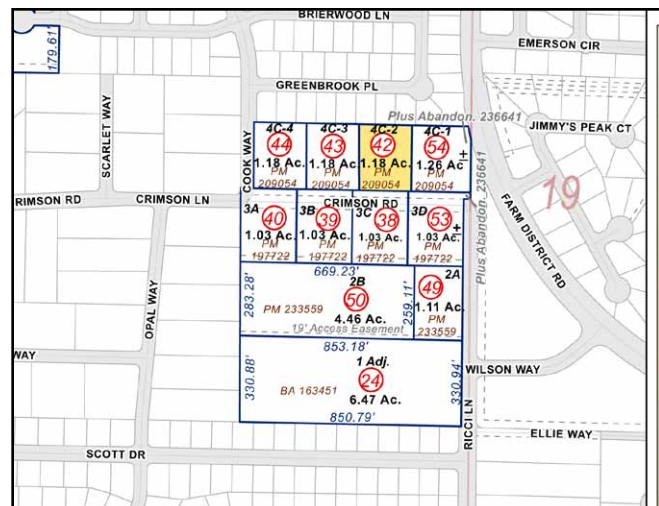
BANK OWNED

Sale Price - \$615,000



Property Information:

- **Building Size:** 6,760 ± Square Feet
- **Land Size:** 1.18 Acres
- **Location:** 380 Crimson Road
Near Farm District Lane
- **APN:** 021-171-42
- **Taxes:** \$7,945.68/Year
- **Zoning:** Commercial / Rural
- **Use:** Daycare
- **Age:** Built in 2008
- **Current Lease:** Call for Details



COMMERCIAL PARTNERS
OF NEVADA

Commercial Real Estate Services

Loopnet ID: 17522610

5310 Kietzke Ln | Ste 204 | Reno, NV

T [775]329-4000 F [775]329-8526

www.COMMERCIALPARTNERSNV.COM

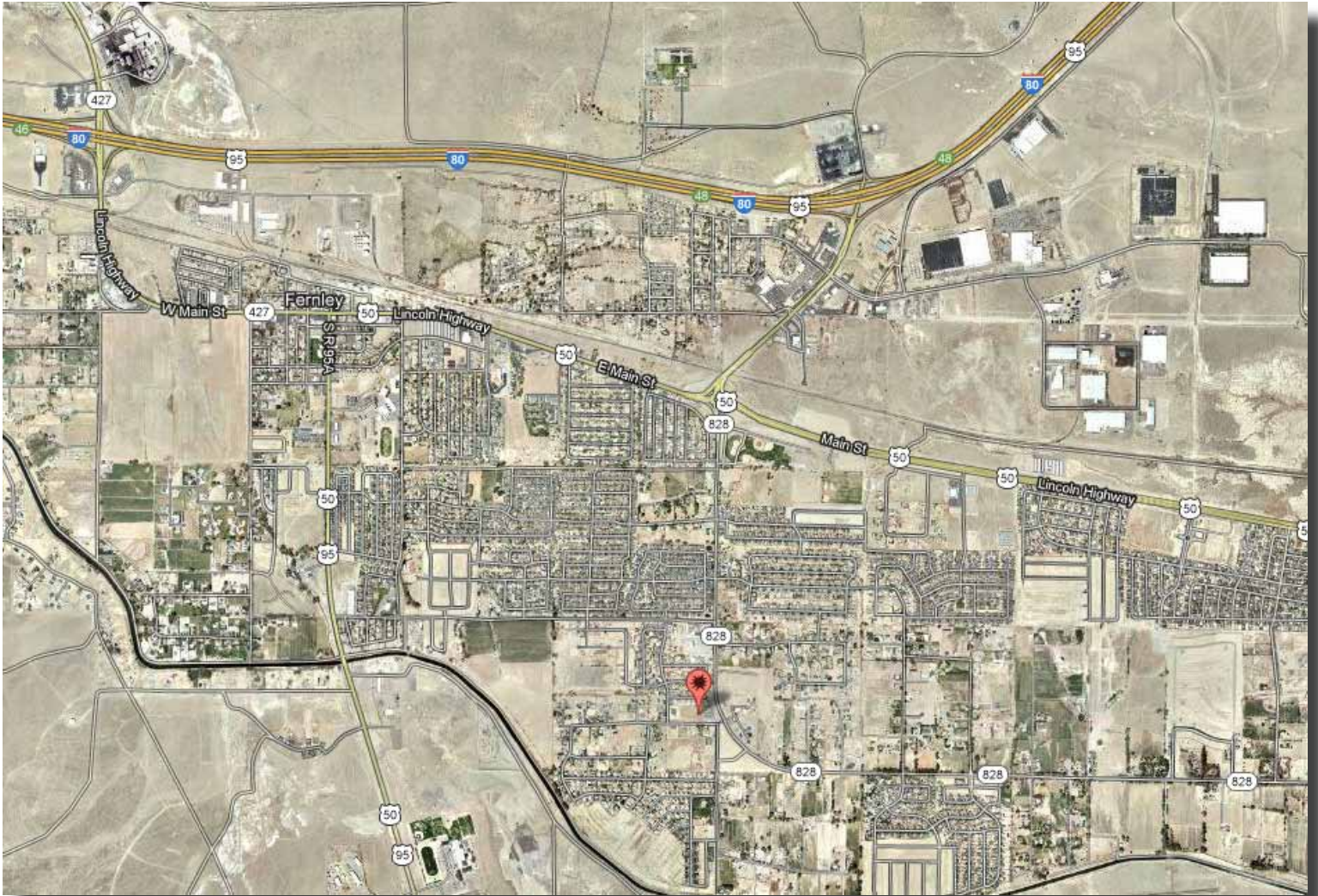
Frank Gallagher
frank@commercialpartnersnv.com

Kyle Rea
kyle@commercialpartnersnv.com

All information is deemed accurate but is not guaranteed. You and your tax and legal advisors should conduct your own investigation of the property and transaction.

Fernley Commercial Building

380 Crimson Road, Fernley, NV



COMMERCIAL PARTNERS
OF NEVADA

Commercial Real Estate Services

5310 Kietzke Ln | Ste 204 | Reno, NV

T [775]329-4000 F [775]329-8526

Frank Gallagher
frank@commercialpartnersnv.com

www.COMMERCIALPARTNERSNV.COM

Kyle Rea
kyle@commercialpartnersnv.com

All information is deemed accurate but is not guaranteed. You and your tax and legal advisors should conduct your own investigation of the property and transaction.